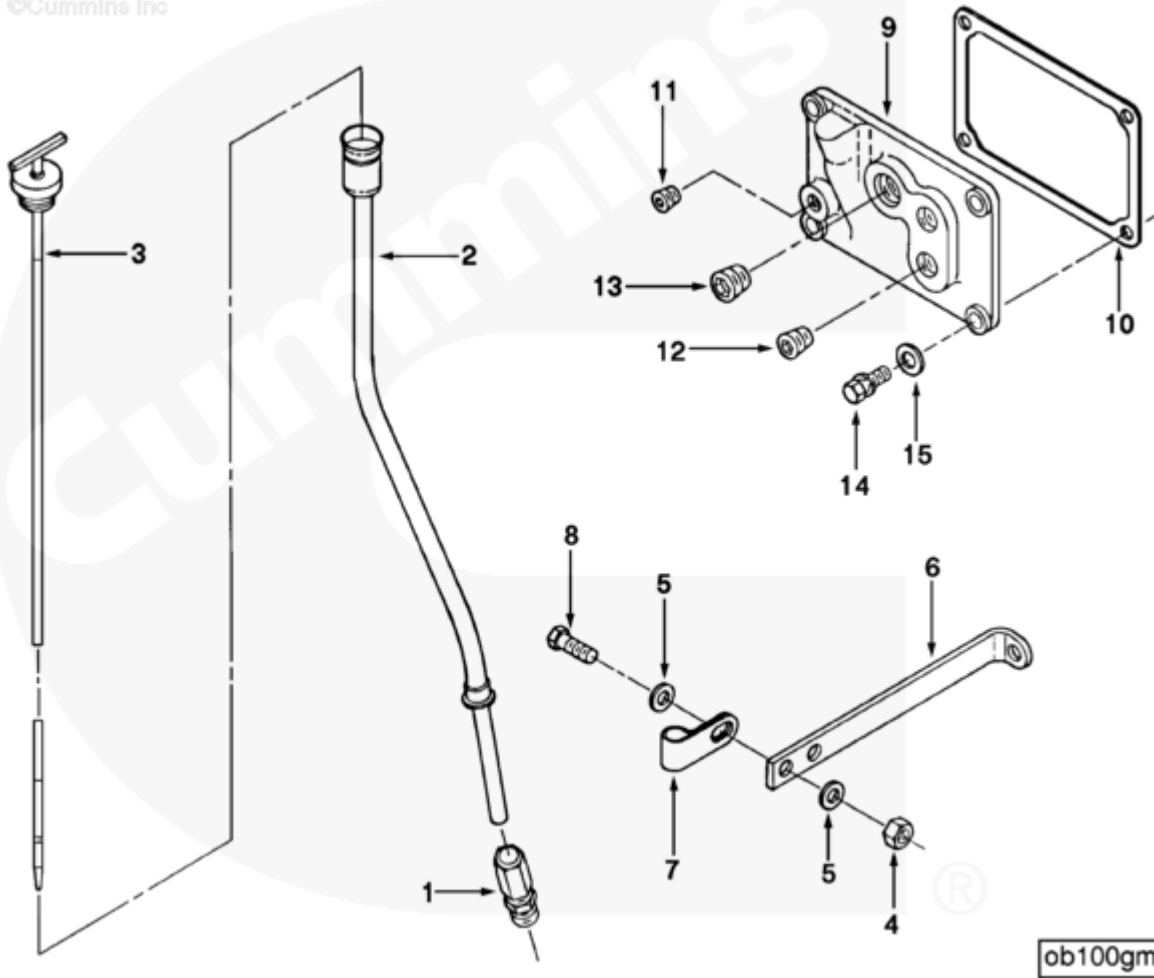




Parts Catalog - Option Detail

Electronic Parts Catalog - Option Detail				
Option	Group	Graphic	Film Card	Date
OB1173	07.02	ob100gm	F	15-MAR-92
Engines	NH/NT 855, NT495, NT743, NTA855 N106			

©Cummins Inc



[SMALL](#) | [MEDIUM](#) | [LARGE](#)

Cart	Ref No	Part Number	Part Description	Required	Remarks
View My Cart					
		OB1173	Oil Level Gauge		
					Oil Level Gauge
					23 inch oil gauge tube
					connector type mounting on

					9 gallon front sump oil pan,
					exhaust side. Tube terminates
					7 inches from front face of
					block, 17 inches from
					centerline of engine,
					18 inches above centerline of
					crank. Bayonet marked for
					3.0 degrees power angle and
					zero degree tilt. Hand hole
					has one 1/2 inch NPT hole.
<input type="checkbox"/>	1	163759	Tube Connector	1	
<input type="checkbox"/>	2	3035659	Oil Gauge Tube	1	
<input type="checkbox"/>	3	216484	Dipstick	1	
<input type="checkbox"/>	4	S 223	Heavy Hexagon Nut	1	3/8 - 16 UNC
<input type="checkbox"/>	5	S 602	Plain Washer	2	3/8 in.
<input type="checkbox"/>	6	70907	Tube Brace	1	
<input type="checkbox"/>	7	200064	Clip	1	
<input type="checkbox"/>	8	S 117	Hexagon Head Cap Screw	1	3/8 - 16 x 3/4 in.
<input type="checkbox"/>	9	3057477	Hand Hole Cover	1	
<input type="checkbox"/>	10	3068466	Hand Hole Gasket	1	
<input type="checkbox"/>	11	3008466	Pipe Plug	1	1/4 NPT.
<input type="checkbox"/>	12	3008468	Pipe Plug	3	1/2 NPT.
<input type="checkbox"/>	13	3008469	Pipe Plug	1	3/4 NPT
<input type="checkbox"/>	14	3010595	Captive Washer Cap Screw	4	3/8 - 16 X 1 in.
<input type="checkbox"/>	15	3042329	Plain Washer	4	3/8 in.